

LTECH 1CH Multi-control Switch Panel

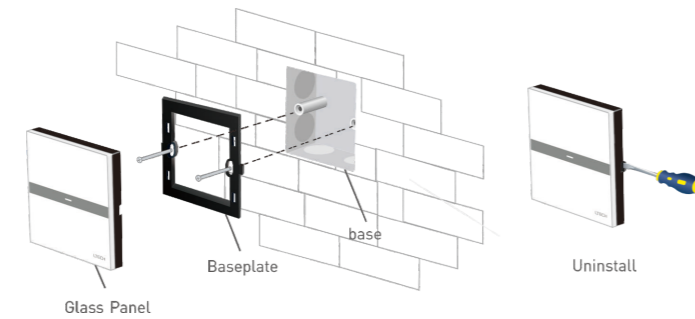


Technical Specs:

K1RF 1CH Multi-control Switch Panel		VK Remote	
Wireless Frequency:	433MHz	Remote Option	4 zones control
Input Voltage:	200~240Vac, 50Hz	Working Voltage:	3Vdc (battery CR2032)
Max Load Power:	500W	Wireless Frequency:	433MHz
Min Load Power:	5W	Working Temp.:	-30°C~55°C
Working Temp.:	-30°C~55°C	Package Size:	L150xW46xH18(mm)
Package Size:	L113xW112xH50(mm)	Weight(G.W.):	85g
Weight(G.W.):	230g		

* Load Type: LED lamps / Incandescent lamps / Fluorescent lamps / Energy-saving lamps

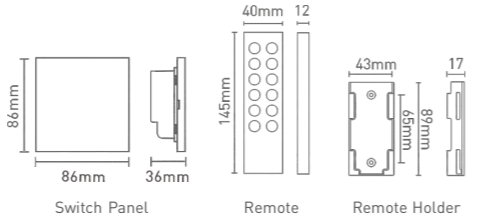
Installation Instruction:



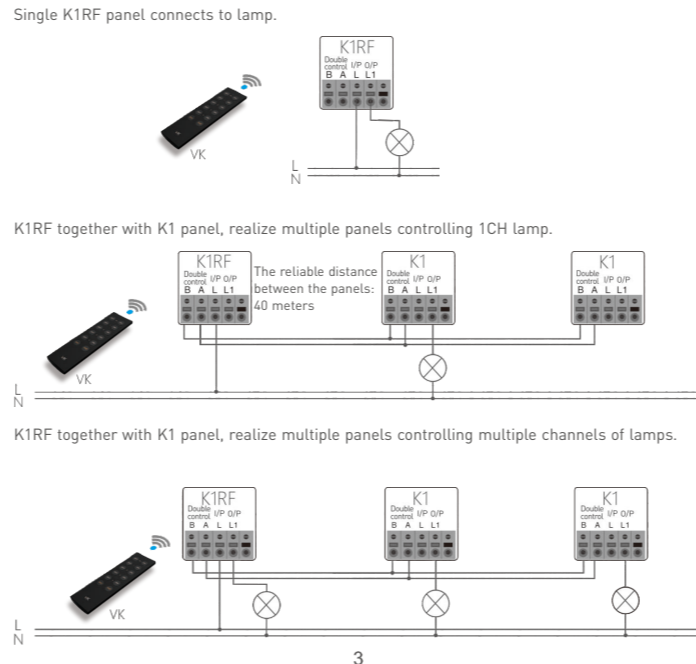
Function:



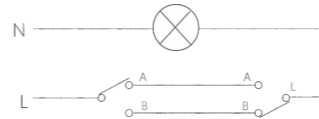
Product Size:



Wiring Diagram



Replace the double-control switch of traditional family.



Introduction of multi-control switch panel:

Multi-control switch panel with double control function only when they have been matched, please turn on the lamps if you do the following steps.

Match code:



Long press "On/Off" key on the panel ① for about 6s, the buzzer beeps once, the indicator light flickers. Then press "On/Off" key on the panel ②, match successfully

Clear code:



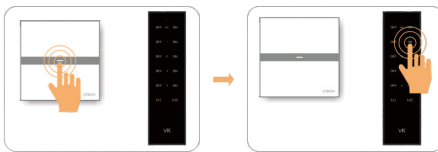
Long press "On/Off" key on the panel for about 10s, the buzzer long beep twice, the indicator light flicker twice, deactivate the matching successfully

Operating Instruction for Remote:



Match code between the remote and the receiver
* Please turn on the lamp if you do the following steps.

Match code:



Press "On/Off" key on the switch panel for about 6s, the buzzer beeps once, the indicator light flickers. Then press the matching zone key on the remote, match successfully.

Clear code:



Long press "On/Off" key on the panel for about 10s, the buzzer long beep twice, the indicator light flicker twice, deactivate the matching successfully

Attn: One panel can be matched with max 10 remotes.

Attention:

1. Live line can be wired to any panel if 2 or 3 multi-control switch panel work together.
2. the lamps can be connected to any switch panel.
3. Please make sure that A connected with A, B with B for multi-control wiring.
4. Multi-control switch panel works only when they have been matched.